

# DPE

DiversePrecisionEngineering

## The Customer

Diverse Precision Engineering is an approved supplier to Transport for London and supports London Underground's Acton Works depot with an ongoing range of components and assemblies since 2004 for the Bakerloo, Central & Victoria lines.

Our in-depth, practical experience of a wide range of manufacturing materials and methods allows us to deliver a variety of cost effective & quality solutions.



## The Application

LUL maintain and control rolling stock produced in the 1950's, the maintenance of which requires reengineering works, replication of existing components and assemblies and component supply solutions.

DPE have provided a variety of solutions a small selection of which are explained below;

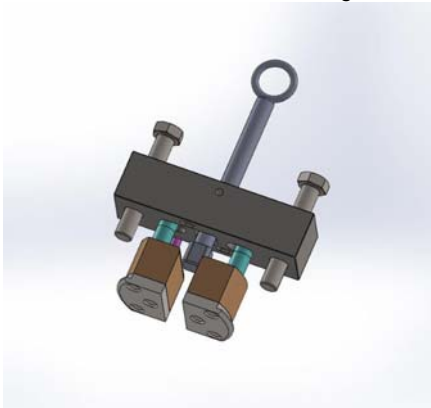


## Production of MAR Box

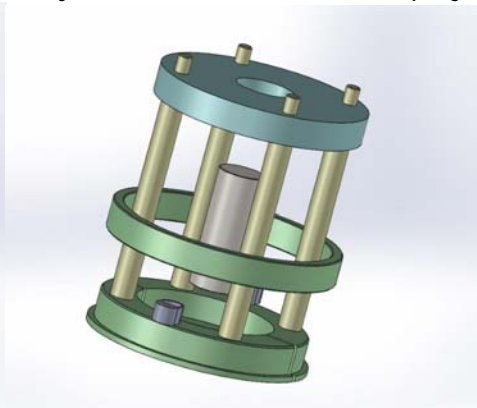
Safety critical auxiliary equipment required for the housing of electrical and pneumatic equipment, fixed to the chassis beneath the train. DPE, working closely with LUL engineers, designed, detailed and manufactured the steel framed, steel clad housing.

## Replicating Tooling

Working from original tools circa 1950's, DPE won the order to replicate in their entirety a range of tools used to assist in the removal of gearboxes and other heavy equipment from the train carriages. We drew, detailed and manufactured the tools using modern day methods to deliver this unique job to the required standard and quality.



Machined Steel Compensating Link Block



Machined Steel Shoe Beam Assembly



Bronze Cast & Machined Driver Door Hinges



For further details about these or any other projects please contact us;

[info@diverseprecisionengineering.co.uk](mailto:info@diverseprecisionengineering.co.uk) [Unit 4, 145 Sterte Road, Poole, Dorset, BH15 2AF] [Tel: 01202 674944]